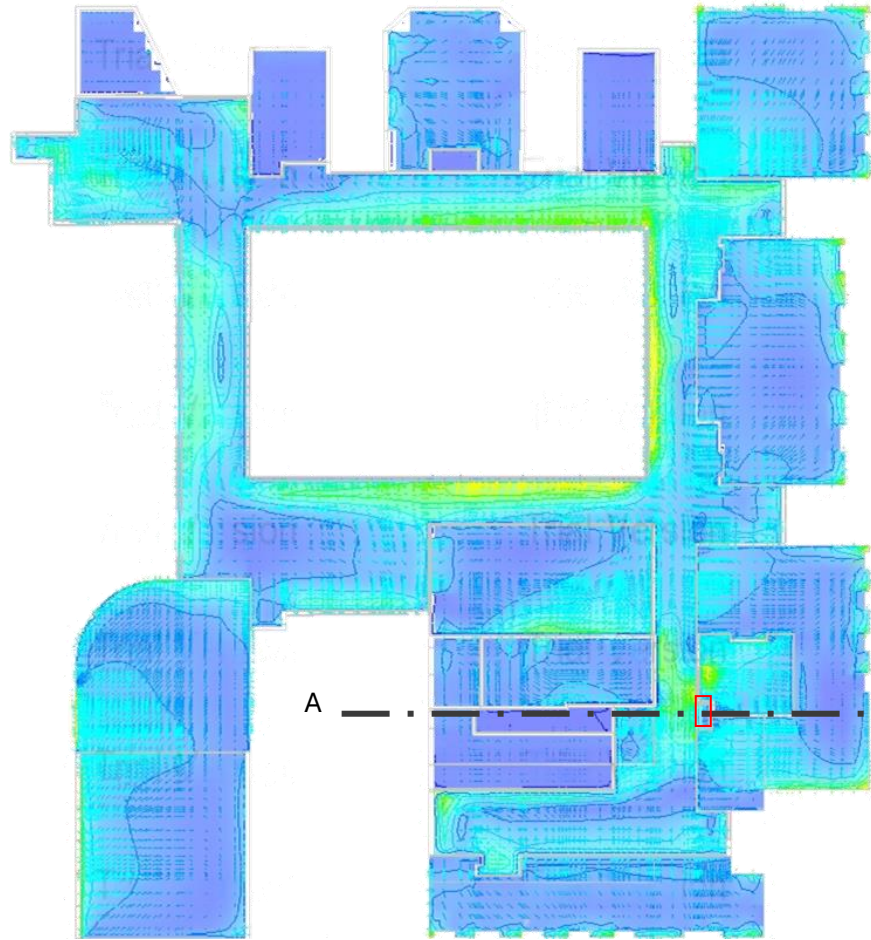
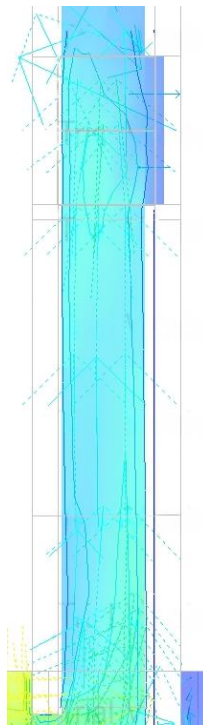


# Ventilation Strategies

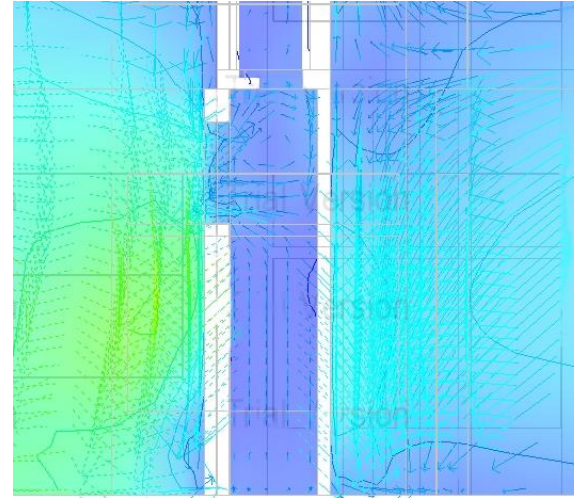
Computational Fluid Dynamic Study of Proposed Case



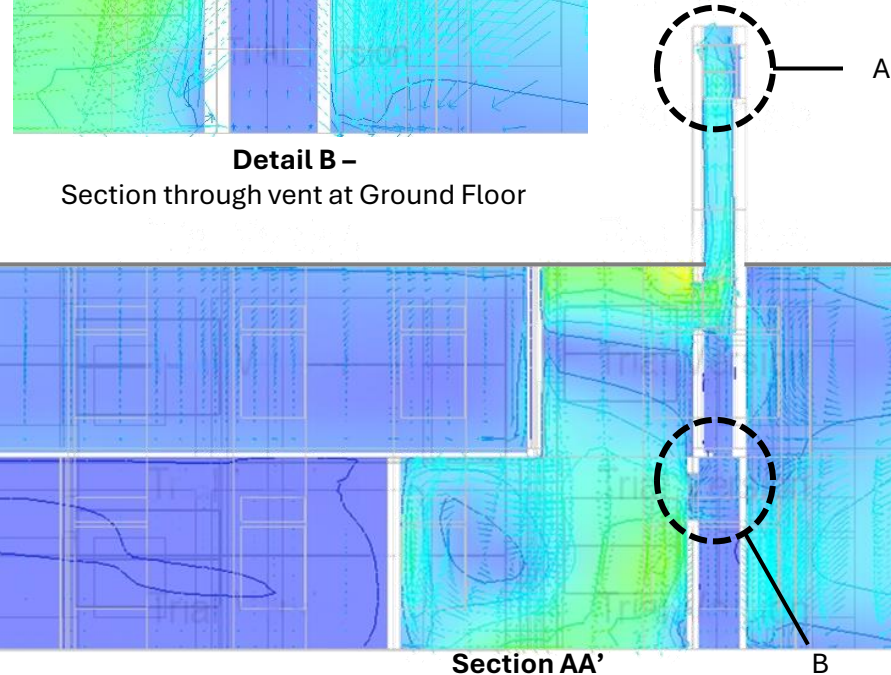
Plan – Ground Floor at 2.9m



**Detail A –**  
Section through  
stack



**Detail B –**  
Section through vent at Ground Floor



Section AA'

B

The west wind entering from corridors and navigated into the workspace of admin area and further extracted out through stacks, improving ventilation.



**Reference image of**  
Stack on the terrace  
floor

